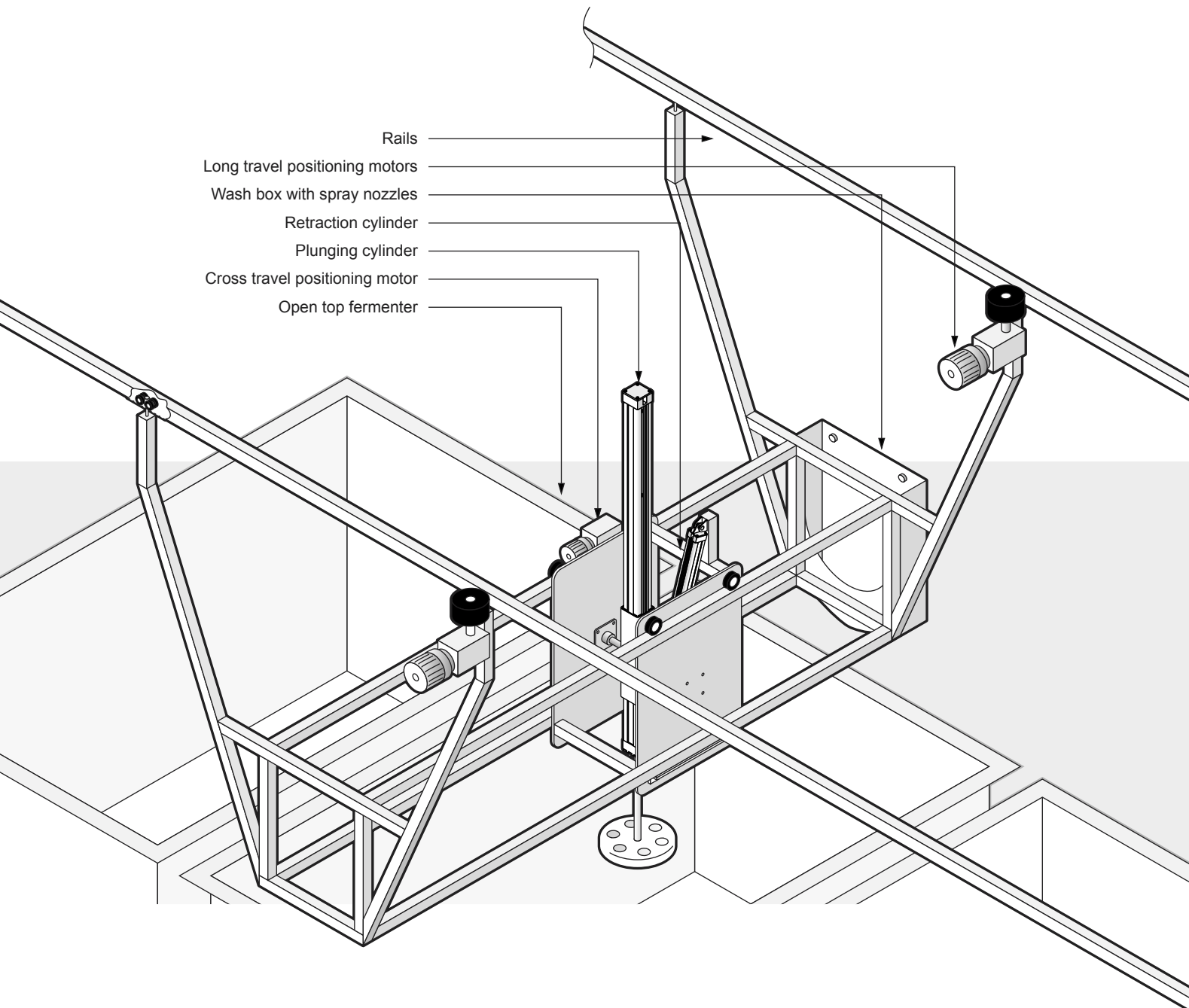


# Smart Plunger™ custom range

custom made plunging solutions



## Customised to your needs

The Smart Plunger™ is a versatile unit that can be customised and installed into just about any red wine making system.

The plunging unit can be constructed in a variety of sizes and mounted to a variety of positioning and transport systems to enable manual, semi-automatic or fully automated plunging of open-top red wine ferments.

## Plunging open-top fermenters

In the example above, the plunger is mounted on a rolling carriage. Electric motors actuate movement on both horizontal axes, allowing full access to a bank of open-topped fermenters with the plunger head.

To move from tank to tank, the plunging cylinder is retracted to a horizontal position and the head is placed in the wash box and flushed with water during transport.

## Smart Plunger™ Spider ▶

This unit features a Smart Plunger™ mounted on a movable trolley. The trolley mounts to the tank rims of a row of open-topped fermenters and the rollers allow the device to be easily moved from tank to tank.

The unit is controlled using the extendable arm, and air cylinders aid both in easy positioning and in locking down the system during plunging. The unit is capable of plunging any part of two open-top tanks from one lock-down position.



## ◀ Smart Plunger™ Robo

As featured on the reverse of this sheet, this model demonstrates how the Smart Plunger™ can be utilised in a fully automatic, computer-controlled system.

This unit accesses a bank of open-topped fermenters using an overhead rail system.

## Smart Plunger™ Gyro ▶

This Smart Plunger™ is mounted to an overhead rail to allow easy transport from tank to tank. A combined universal joint and brake at the mount point allows simple manual positioning of the device by an operator. The extendable control handle enables easy access to fermenters at any position within the tank.

*Please note the models illustrated are subject to continued development and improvement and may differ in some respects to the current models.*



**Solutions in Stainless**  
*specialists in stainless steel development and fabrication*

☎ David Coote (03) 6344 2399

☎ (03) 6344 2355

✉ PO Box 925 Kings Meadows TAS 7429

🌐 [www.solutionsinstainless.com](http://www.solutionsinstainless.com) / [office@solutionsinstainless.com](mailto:office@solutionsinstainless.com)